

PEEL
NEWCOMER
STRATEGY GROUP



Creating a
welcoming community...
together.

**The Conceptual Framework
for the Research Work of PNSG**

Research Work of PNSG

Funded by:



**Citizenship and
Immigration Canada**

**Citoyenneté et
Immigration Canada**



United Way
of Peel Region

Region of Peel
Working for you

A CONCEPTUAL FRAMEWORK FOR THE RESEARCH WORK OF THE PEEL NEWCOMER STRATEGY GROUP

January 2010

Funded by



**Citizenship and
Immigration Canada**

**Citoyenneté et
Immigration Canada**

**A CONCEPTUAL
FRAMEWORK FOR THE
RESEARCH WORK OF THE
PEEL NEWCOMER
STRATEGY GROUP**

January 2010

Prepared for the Peel Newcomer Strategy Group

**Prepared by Dr. Paula DeCoito
The Social Planning Council of Peel**

TABLE OF CONTENTS

TITLE	PAGE #
Foreword	i
Acknowledgments	iv
Introduction	1
I. Background of the Peel Newcomer Strategy Group (PNSG)	4
II. A Graphic Summary of the Research Framework for PNSG	5
III. Information Needs of PNSG: Primary Research/Planning Questions	6
IV. Relevant Information for Primary Research/Planning Questions	8
V. A Summary of the Information Needed by Type and Source of Information	13
BIBLIOGRAPHY	15
APPENDIX	18-23
<ul style="list-style-type: none">▪ <i>Fact Sheet on the Total Immigrant Population in Peel (2006)</i>▪ <i>Fact Sheet on the Recent Immigrant Population in Peel (2006)</i>▪ <i>Fact Sheet on the Visible Minority Population in Peel (2006)</i>▪ <i>Map: Visible Minority Groups in Peel as a Percentage of Different Peel Neighbourhoods (2006)</i>▪ <i>Fact Sheet on Agencies Serving Newcomers to Canada and Ethno-Specific Groups in Peel (2006)</i>▪ <i>Map: Geographic Distribution of Agencies Serving Newcomers to Canada and Ethno-Specific Groups in Peel (2009)</i>	

FOREWORD

The Peel Newcomer Strategy Group (PNSG)

The Peel Newcomer Strategy Group (PNSG) is a community-based planning group whose primary mandate is to develop a system-wide strategy or model for the successful settlement and integration of new immigrants and refugees in Canada (newcomers to Canada). This report (Conceptual Framework) is one component of a research project on the settlement services sector in Peel Region undertaken by PNSG in order to get factual information on the size, scope and geographic distribution of organizations or agencies that provide services for the settlement and integration of newcomers in Peel.

The PNSG Research Project

The PNSG research project on the settlement and integration of newcomers in Peel (of which this report, Conceptual Framework is only one part) addressed two major questions:

A Meta-Research or Pre- Planning Question -What information does PNSG need in order to develop a system-wide model for the successful settlement and integration of new immigrants and refugees in Peel Region?

A Meta-Capacity Building or Pre-Development Question – What are the organizational characteristics of the agencies/organizations in Peel that are focused specifically on the settlement and integration of newcomers to Canada? (Characteristics related to size and focus or scope of these agencies)

Data Sources Used for the Project

Many official and professional sources of information were used to address the questions under study:

- Canada Revenue Agency, Charities and Giving, 2004 & 2008
- Citizenship and Immigration Canada's Funding Allocation Report (April 1 – June 30, 2009)
- Peel Information Network, Ontario, Canada (PINET)
- Peel Halton Dufferin Training Board Newcomer's Guide, 2007
- Peel Halton Workforce Development Group, Newcomer's Guide, 2009
- Region of Peel (Peel Data Centre & Immigration Web Portal)
- United Way of Peel Region's Directory
- Social Planning Council of Peel's immigration and settlement reports
- Settlement.org
- 211 Ontario

Sample Used for the Research Project

A survey of the above data sources revealed a total of 95 agencies (or organizations) in Peel that are directly focused on newcomers to Canada and ethno-specific groups or offer specific services to newcomers in addition to their regular services. These agencies are organized into two main categories:

- Settlement Agencies (n =71)
- Mainstream Agencies with specific services for newcomers (n =24)

Settlement agencies are organizations that are focused mainly on serving newcomers to Canada and specific ethnic groups in Canada.

The Settlement Agencies are further organized into four (4) categories:

- Ethno-Specific Service Agencies (n= 27)
- Ethno-Specific Social Clubs (n=20)
- Multi-Ethnic Agencies (n=19)
- Neighbourhood Centres (n=5)

Mainstream agencies are organizations that are focused on serving the general population, including newcomers to Canada and all ethnic groups in Canada. Some of them offer services that are specifically geared to newcomers to Canada in addition to their regular offering of services for the general population.

Deliverables of the Research Project

The research undertaken to address the questions of the project yielded five (5) distinct but related reports:

- **A Conceptual Framework for the Research Work of the Peel Newcomer Strategy Group (2010)** for the purpose of developing a system-wide model for settlement and integration of newcomers in Peel. This report identifies the key research questions that PNSG should address as part of its activities to achieve its planning objectives.
- **An Inventory of Different Types of Settlement Services in Peel (2010).** This report provides a database of 95 organizations serving newcomers to Canada and ethno-specific groups in Peel by type of organization (ethno-specific service agency, ethno-specific social club, multi-ethnic agency, neighbourhood centre) and type of visible minority group served.

- **An Inventory of Settlement Services in Peel by Postal Code and Neighbourhood Level (2010.)**
This report provides a database on 95 organizations located in 15 different neighbourhoods. This document also identifies the actual number of organizations serving newcomers and refugees in specific postal code areas. (A different version of the above Inventory)

- **The Size and Scope of the Settlement Services Sector in Peel (2010).** This report provides a quantitative analysis of selected characteristics of agencies serving newcomers in Peel (number of agencies, types of agencies, geographic location, years in existence, charitable status, number of staff, size of Board of Directors, programs and services, gender of Executive Director or President, etc.).

- **A Preliminary Analysis of Public Funding for Settlement Service Agencies in Peel (2010).** This provides information on the revenue and expenditures of 25 (of 71) settlement service agencies in Peel in 2003/04 and 2007/08. The 25 agencies are registered charitable agencies who report their revenues and expenditures to the Canadian Revenue Agency on an annual basis. (This report is an internal, confidential document for PNSG.)

ACKNOWLEDGMENTS

The Peel Newcomer Strategy Group wishes to acknowledge the funding support of Citizenship and Immigration Canada for the production of this report.

INTRODUCTION

Background and Rationale for Study

Between 2001 and 2006, Peel's population grew from 988,950 to 1,159,400. This represents a population growth rate of 17.2%. Immigration is the primary factor driving the rapid population growth in Peel. In 2006, immigrants made up 48.6% of Peel's total population. This is significantly higher than the composition of immigrants in Ontario (28.3%) and Canada as a whole (19.8%). Furthermore, between 2001 and 2006, the immigrant population in Peel grew by 32.1%. In addition, fully half (50%) of Peel's population identify themselves as members of visible minority groups compared to only 22.8% and 16.2% respectively in Ontario and Canada (Canada Census, 2006). As a growing immigrant recipient region, Peel has become richly diverse and vibrant with over 93 distinct ethnic groups, 60 different spoken languages, and several different religions practised by its residents.

This immense ethno-cultural diversity in Peel, which continues to grow, requires an on-going response of culturally appropriate services and increased settlement and integration services for new immigrants. This is critical in order to make Peel Region a welcoming and socially inclusive place for all of its residents, including those who are newcomers to Canada.

The Peel Newcomer Strategy Group (PNSG) is a community-based planning body charged with the objective of developing a system-wide strategy and service model to enable the successful settlement and integration of new immigrants and refugees in Peel Region. One of the requirements for achieving this objective is factual information about the existing services for newcomers and immigrant groups in Peel Region.

Purpose of the Report

The purpose of this report is to provide a conceptual framework for the research and planning work of the Peel Newcomer Strategy Group. The report addresses the question: *What information does PNSG need in order to develop a system-wide model for the successful settlement and integration of new immigrants and refugees in Peel Region?* The report identifies the major kinds of information that PNSG needs to obtain and analyze in order to achieve its planning objectives. As such, the report is not only useful for PNSG's planning purposes but also for its staff recruitment and staff training activities.

Intended Audience for the Report

The report has been written primarily for PNSG in order to help the latter develop a system-wide strategy for the successful settlement and integration of immigrant newcomers. Researchers in the fields of settlement and integration, non-profit management, capacity-building and civic engagement may also find the report to be relevant for their work.

Limitations of the Report

The report is intended to be a research and planning tool for PNSG. As such, it is more of an internal planning document than an educational document for the public or for service providers. The reader will not find here a review of the literature on settlement and integration of newcomers or a review of the types of services and models of service delivery for new immigrants. (That kind of research has already been undertaken by PNSG as part of its community consultation project.) The reader will find, in this report, guidance on what kinds of information are needed in order to begin the development of a model for the successful settlement and integration of newcomers to Canada (in the Peel Region).

**A CONCEPTUAL FRAMEWORK FOR THE RESEARCH WORK OF THE PEEL
NEWCOMER STRATEGY GROUP**

I. BACKGROUND OF THE PEEL NEWCOMER STRATEGY GROUP (PNSG)

Organizational Characteristics

- PNSG is a planning roundtable focused on the settlement and integration of new immigrants in Peel Region.
- The PNSG was established jointly in 2006 by the United Way of Peel Region and the Region of Peel. It is chaired by the CEO of the United Way of Peel Region and the Human Services Commissioner of the Region of Peel.
- The members of PNSG include representatives from government, educational institutions, settlement agencies, community funders, the Police, hospitals, and community-based planning organizations.
- Staffing of the PNSG consists of a Director, a researcher, a communications officer, an administrative assistant, consultants and project-specific workers.
- PNSG is funded primarily by Citizenship and Immigration Canada. Other funders include the United Way of Peel, the Region of Peel, and the Ontario Trillium Foundation.
- The time line for the designated work of PNSG is two to three years.
- PNSG is likely to evolve into a permanent planning body for settlement and integration of new immigrants and refugees in Peel Region.

Primary Goal of PNSG

- The successful settlement and integration of new immigrants in Peel Region

Primary Objective of PNSG

- To develop and implement a comprehensive, community-wide model for the successful settlement and integration of newcomers in Peel

Deliverables of PNSG

- A Model for the Successful Settlement and Integration of Newcomers in Peel
- Implementation of the Settlement and Integration Model for Peel
- Monitoring and Evaluation of the Model for Settlement and Integration in Peel
- Continual Modification and Development of the Model for Settlement and Integration in Peel

Major Principles of PNSG's Work

- Evidence-based best practices (use of)
- Equity and Social Inclusion
- Economic Prosperity
- Valuing of Cultural Diversity
- Community Participatory Process (use of)

II. A GRAPHIC SUMMARY OF THE RESEARCH FRAMEWORK FOR PNSG

Supply: Services (Literature Review/Local Data)

- Perspectives
 - **Best Practices**
 - Models/System of Services
 - Inventory (includes organizational capacity)
 - Partnerships
 - Models of Delivery (existing)
- Critical Analysis (assets, challenges, gaps, etc.)*

Demand: Critical Issues (Literature Review; local consultations)

- Perspectives
- Settlement: issues pertaining to the newcomer; issues pertaining to the host society; **best practices**
- Integration: issues pertaining to the newcomer; issues pertaining to the host society; **best practices**

In relation to: Immigrants, refugees, temporary workers, students, visitors, undocumented persons



Supply: Resources* (Local Data)

- Perspectives (Literature Review)
 - **Best Practices**
 - Policies
 - Planning
 - Partnerships
 - Funding
- Critical Analysis (assets, challenges, gaps, etc.)*
**Available and Needed*

Demand: People (Official statistics)

- Immigrants, refugees, temporary workers, students, visitors, visible minority groups, undocumented persons (*by population size and growth, ethnic groups, socio-economic characteristics, geographic distribution, etc.*)

III. INFORMATION NEEDS OF PNSG: PRIMARY RESEARCH AND PLANNING QUESTIONS

A. DEMAND: Newcomers to Canada; Critical Issues

What are the characteristics, needs and critical issues of the newcomer population in Peel? (*Census data, local consultations.*)

B. SUPPLY/CAPACITY: Services for Newcomers to Canada; Resources

What are the characteristics, capacities and challenges of the service infrastructure for the newcomer population in Peel? (*Locally-based field research; local consultations, etc.*)

C. BEST PRACTICES

Successful Settlement and Integration of Newcomers to Canada

1. What are the indicators of successful settlement and integration for newcomers to Canada? (*Literature review.*)
2. To what extent are these success indicators present in Peel? (*Literature review, field/service research, factual data, perception data.*)
3. What factors are helping or hindering the successful settlement and integration of newcomers in Peel? (*Literature review, field research, critical analysis of findings related to questions 1 and 2 above; community consultations; factual data; perception data.*)
4. What (else) is needed in Peel in order to facilitate the successful settlement and integration of newcomers in Peel? (*Critical analysis of findings related to questions 1, 2 and 3 above; community consultations; factual data, perception data.*)

System-Wide Service Models for the Successful Settlement and Integration of Newcomer

5. What are the different types of models for the successful settlement and integration of newcomers? (*Literature review; consultations with sector experts and community leaders*)
6. Which of these models is being used in Peel (in part or fully)?
7. Which, if any, of these models is the most suitable for Peel? (*Critical analysis of all data collected to date; community consultations; synthesis of findings from critical analysis and community consultations.*)
8. If “none” is the answer to question 2: What should be the model for settlement and integration of newcomers in Peel? (*Critical analysis of all data collected to date, community consultations, synthesis of findings from critical analysis and community consultations.*)

D. IMPLEMENTATION OF THE PEEL MODEL FOR SETTLEMENT AND INTEGRATION OF NEWCOMERS TO CANADA

1. What are the requirements for the implementation of the Peel model for settlement and integration of newcomers? (*People, policies, resources, timing, etc.*)
2. How are these requirements to be met? (*Who, how, when, where, etc.*)
3. What is the step-by-step plan for implementing the Peel model for settlement and integration of newcomers? (*Process, products, timelines, persons responsible, etc.*)
4. What approach/best practices should be used to monitor and evaluate the implementation of the Peel settlement and integration model?
5. What approach/process should be used to facilitate on-going modification and development of the Peel model for settlement and integration of newcomers to Canada?

IV. RELEVANT INFORMATION FOR PRIMARY RESEARCH/PLANNING QUESTIONS

A. DEMAND: Newcomers to Canada; Critical Issues

Research Question

What are the characteristics and needs of the newcomer population in Peel?

Relevant Information (Census data, local community consultations, etc.)

Characteristics of the Immigrant and Newcomer Population in Peel:

- Total immigrant population
- Immigrant newcomer population
- Immigrant refugee population
- Temporary workers population
- Student visa population
- Visitors population
- Undocumented immigrant population

Each of the above immigrant groups should be described in relation to the following kinds of characteristics:

- Population size and growth
- Ethnic groups
- Socio-economic characteristics (age, gender, marital status, education, jobs, income, etc.)
- Needs, challenges
- Assets (characteristics of the group that are helpful for their successful integration into Canada)
- Geographic distribution (GIS mapping, etc.)
- Etc.

B. SUPPLY/CAPACITY: Services for Newcomers to Canada; Resources

Research Question

What are the characteristics, capacities and challenges of the service infrastructure for the newcomer population in Peel?

Relevant Information

Services (*Local Factual/Perception Data: Surveys, Community Consultations interviews, etc*)

- Inventory of agencies and groups focused on newcomers in Peel
- Existing approach/model for settlement and integration of newcomers in Peel
- Perspectives on settlement and integration held by different stakeholders in Peel
- Partnerships focused on settlement and integration of newcomers in Peel
- Organizational capacity (organizational and service characteristics of agencies/groups in Peel serving newcomers)

Critical Analysis of the above: assets, challenges, gaps, etc.

- *In relation to: Immigrants, refugees, temporary workers, students, visitors, undocumented persons*
 - *By program, ethnic group, gender, geography, phase of settlement and integration*
- **Local Policy Context for Settlement and Integration of Newcomers in Peel Region**
 - Agencies/institutions, legislation and public policies of the federal, provincial and municipal levels of government:
 - Directly focused on settlement and integration
 - Of major relevance to settlement and integration
 - **Comparative Information (other regions in Ontario, other provinces, other countries)**
 - **Local Financing Context for Settlement and Integration of Newcomers in Peel**
 - **Financial and Related Resources for Settlement and Integration of Newcomers in Peel**
 - **Critical Issues Related to the Settlement and Integration of Newcomers in Peel (based on analysis of information on above areas/items)**
 - **Experts/Resource Persons/Organizations (settlement and integration of new immigrants)**

C. BEST PRACTICES FOR SUCCESSFUL SETTLEMENT AND INTEGRATION OF NEWCOMERS TO CANADA

Research Questions

▪ **Successful Settlement and Integration**

1. What are the indicators of successful settlement and integration of newcomers to Canada? (*Literature review.*)
2. To what extent are these success indicators present in Peel? (*Literature review, field/service research, factual data, perception data.*)
3. What factors are helping or hindering the successful settlement and integration of newcomers in Peel? (*Literature review, field research, critical analysis of findings related to questions 1 and 2 above; community consultations; factual data; perception data.*)
4. What (else) is needed in Peel in order to facilitate the successful settlement and integration of newcomers in Peel? (*Critical analysis of findings related to questions 1, 2 and 3 above community consultations; factual data, perceptual data.*)

▪ **System-Wide Service Models**

5. What are the different types of models for the successful settlement and integration of newcomers? (*Literature review; consultations with sector experts and community leaders.*)
6. Which of these models is being used in Peel (in part or fully)?
7. Which, if any, of these models are the most suitable for Peel? (*Critical analysis of all data collected to date; community consultations; synthesis of findings from critical analysis and community consultation.*)
8. *If “none” is the answer to question 2: What should be the model for settlement and integration of newcomers in Peel? (Critical analysis of all data collected to date, community consultations, synthesis of findings from critical analysis and community consultations.)*

Relevant Information

▪ *Perspectives on Settlement and Integration*

- Assimilation Perspective: focused on integration into the dominant culture
- Multiculturalism Perspective: focused on maintenance of diverse cultures
- Individualistic Perspective: focused on needs of the individual
- Civic Perspective: focused on needs of the individual as citizen
- Social Ecology Perspective: focused on needs of the society as a whole
- Equity and Social Inclusion Perspective
- Process/Phase Perspectives: focused on hierarchy of needs (phases of settlement, etc.)
- Service Perspectives: focused on different types of services
- Parallel Service Systems versus Integrated Service System

Definitions of Settlement and Integration

These will be related to the different perspectives of/approaches to settlement and integration (mentioned above).

Critical Issues Related to Settlement and Integration of New Immigrants

These issues will be related to the different perspectives of/approaches to settlement and integration. They can be organized into the following major categories

- Issues related to the individual immigrant newcomer
- Issues related to the receiving/host society

Best Practices (linked to perspectives above)

- Successful Settlement and Integration for Immigrant Newcomers
- Models/Approaches for Service Delivery to Newcomers
- Implementation of Models/Programs (of relevance to settlement and integration)
- Evaluation Approaches
- Systems Modification and Development
- Conducting Research on Settlement and Integration of Newcomers
- Planning for Settlement and Integration of Newcomers
- Public Policies for Settlement and Integration of Newcomers
- Public Financing for Settlement and Integration of Newcomers

D. IMPLEMENTATION OF THE PEEL MODEL FOR SETTLEMENT AND INTEGRATION OF NEWCOMERS TO CANADA (includes monitoring, evaluation and on-going modifications)

Research Questions

1. What are the requirements for the implementation of the Peel model for settlement and integration of newcomers? (People, policies, resources, timing, etc.)
2. How are these requirements to be met? (Who, how, when, where, etc.)
3. What is the step by step plan for implementing the Peel model for settlement and integration of newcomers? (Process, products, timelines, persons responsible, etc.)
4. What approach/best practices should be used to monitor and evaluate the implementation of the Peel settlement and integration model?
5. What approach/process should be used to facilitate on-going modification and development of the Peel model for settlement and integration of newcomers?

Relevant Information

- Questions about implementation tend to be practical questions linked to specific projects and local conditions. As such, they will have to be answered by the “people on the ground” who are actually doing the implementation.
- The information to be used for this part of PNSG’s work will come primarily from the analysis of the information in sections A, B, and C above.
- Critical for the implementation of the selected model are knowledge and skills of relevance to project management and stakeholder management, including skills in negotiations and conflict management.
- Best Practices:
 - Implementation of Models/Programs (of relevance to settlement and integration)
 - Evaluation Approaches
 - Systems Modification and Development
 - Planning for Settlement and Integration
 - Facilitating community participation in system-wide planning projects
 - Project Management
 - Budgeting/Costing
 - Negotiation
 - Stakeholder management
 - Conflict Management

V. A SUMMARY OF THE INFORMATION NEEDED BY TYPE AND SOURCE OF INFORMATION

PLANNING OBJECTIVES OF PNSG (Context/Rationale for Information Needed)

- A. A Model for the Successful Settlement and Integration of Newcomers in Peel
- B. Implementation of the Settlement and Integration Model for Peel
- C. Monitoring and Evaluation of the Model for Settlement and Integration in Peel
- D. Continual Modification and Development of the Model for Settlement and Integration in Peel

RELEVANT INFORMATION (BY TYPE OF INFORMATION/SOURCE)

Professional Literature; Expert Consultations

- Perspectives on Settlement and Integration
- Definitions of Settlement and Integration
- Critical Issues Related to Settlement and Integration of New Immigrants
- Best Practices
 - Successful Settlement and Integration for Newcomers
 - Models/Approaches for Settlement and integration of Newcomers
 - Implementation of Models/Programs
 - Evaluation Approaches
 - Systems Modification and Development
- Public Policy Context for Settlement and Integration of Newcomers in Ontario
- Public Financing Context for Settlement and Integration of Newcomers in Ontario
- Experts/Resource Persons/Organizations on Settlement and Integration

Local Data (Census Data, Service Field Data, Perception Data)

- Inventory of Settlement Services/Agencies in Peel
- Perspective of Settlement and Integration (Most prevalent in Peel among different stakeholders)
- Definition of Settlement and Integration (Most prevalent in Peel among different stakeholders)
- Characteristics of the Immigrant and Newcomer Population in Peel
- Characteristics of Peel's Service Infrastructure for the Settlement and Integration of Newcomers
- Local Policy Context for Settlement and Integration of Newcomers in Peel Region

- Local Financing Context for Settlement and Integration of Newcomers in Peel
- Financial and related Resources for Settlement and Integration of Newcomers in Peel
- Critical Issues Related to the Settlement and Integration of Newcomers in Peel (based on above)
- Critical Analysis of the above data
- Experts/Resource Persons/Organizations

Bibliography

- Agrawal, S., Qadeer, M. & Prasad, A. (2007). Immigrants Needs and Public Service Provision in Peel Region. *Plan Canada* (Summer), 45-49.
- Albiom, N., Finne, R., & Meng, R. (2005). The Discounting of Immigrant's Skills in Canada. *IRPP Choices*, 11(2), 1-23.
- Albiom, N. & Maytree Foundation (2002). *Fulfilling the Promise: Integrating Immigrant Skills into the Canadian Economy*. Caledon Institute for Social Policy, 1-53.
- Bauder, H. & Lusic, T. (2006). *Local, Regional and Transnational Networks and the Integration and Settlement Dispersal of Filipino Immigrants*. University of Guelph. Research report of CERIS Working Paper. Retrieved from <http://ceris.metropolis.net>.
- Bauder, H & Cameron, E. (2002). *Cultural Barriers to Labour Market Integration: Immigration from South Asia and the Former Yugoslavia*. Vancouver Centre of Excellence Research on Immigration and Integration in the Metropolis: Working Paper Series (02-03), 1-30.
- Bermingham, John. (2008, September 3). *Government to Turn Schools into Community "Hubs"*. Vancouver Province. Retrieved from <http://www.canada.com/theprovince/>.
- Brampton Board of Trade (2007). *Barriers to Hiring Skilled Immigrants in North Peel*.
- Brampton Board of Trade (2007). *Labour Needs in North Peel*.
- Canadian Race Relations Foundation (2000). *Unequal Access: A Canadian Profile of Racial*
- Chambon, A., Heller, M., Kanoute, F., Labrie, N., Madibbo, A., Maurg, J., & Malubungi, M. (2001).
- Decoito, P., and Williams, L. (2000). *Setting the Course: A Framework for Coordinating Services for Immigrants and Refugees in Peel Region*. Mississauga: The Social Planning Council of Peel.
- Fong, K. (2008). *Overcoming Structural Racial Discrimination: An analysis of the Toronto Region*
- Immigration Employment Councils' Approach to Improving Skilled Immigrants Labour Market Integration*. Current Issues Paper. Toronto: University of Toronto.
- Galabuzi, G. (2001). *Canada's Creeping Economic Apartheid: The Economic Segregation and Social Marginalization of Racialized Groups*. Toronto: CJS Foundation for Research & Education.

- Galabuzi, G. (2004). Social Exclusion. In D. Rapheal (Ed.) *Social Determinants of Health: Canadian Perspectives* (235-251). Toronto: Canadian Scholars Press.
- Hou, F. and Pico, G. (2003). Visible Minority Neighborhood's Enclaves and Labour Market Outcomes of Immigrants. *Analytical Studies Branch Research Paper Series*, No. 2003204e. Statistics Canada, Analytical Studies Branch.
- Hou, F. & Balakrishnan, T. (1996). The Integration of Visible Minorities in Contemporary Canadian Society. *Canadian Journal of Sociology* 21(3), 307-326.
- Li, S. (2000). Earning Disparities between Immigrants and Native-Born Canadians. *Canadian Review of Sociology and Anthropology*, 37(3), 289-311.
- Li, P. (2004). Social Capital and Economic Outcomes for Immigrants and Ethnic Minorities. *Journal of International Migration and Integration*, 5(2), 171-190.
- Milroy, B. & Wallace, M. (2004). *Ethno Racial Diversity and Planning Practices in the Greater Toronto Area*. CERIS Working Paper No. 18. Toronto: Joint Centre of Excellence for Research on Immigration and Settlement, 1-50. Retrieved from: <http://ceris.metropolis.net>.
- Mohanty, S. (2006). *Quality of Life in Malton*. The Social Planning Council of Peel.
- Mohanty, S. (2005). *A Comparative Perspective of Social Indicators in Real Neighbourhoods, 2001*. The Social Planning Council of Peel.
- Nerad, S., Fernandes, C., Tran, T., Rashid, M. & Audley, J. (2007). *Settlement is a Health Issue*.
- Raphael, D. (2007). *Poverty and Policy in Canada: Implications for Health and Quality of Life*. Toronto: Canadian Scholars' Press.
- Raphael, D. (Ed.) (2004). *Social Determinants of Health: Canadian Perspectives*. Toronto: Canadian Scholars' Press.
- Sahay, T., & Glover, C. (2005). *Newcomer Best Practices Review*. Prepared for the United Way of Greater Toronto, Feb. 14, 2005. [http://www.unitedwaytoronto.com/downloads/whatWeDo/reports/NewcomerBestPractices-Final PublicReport.pdf](http://www.unitedwaytoronto.com/downloads/whatWeDo/reports/NewcomerBestPractices-Final%20PublicReport.pdf)
- Torjman, S. (2006). *Shared Space-The Communities Agenda*. Ottawa: Caledon Institute for Social Policy.
- United Way of Greater Toronto & The Canadian Council on Social Development (2004). *Poverty by Postal Code: The Geography of Neighbourhood Poverty 1981-2001*. Toronto: United Way of Greater Toronto, 2004.

United Way of Peel Region & the Chinese Advisory Council of Peel (2008). *The Needs and Challenges of the Chinese Community in Peel.*

United Way of Peel Region & the Region of Peel (2008). *Investing for Resilience: Community Investment Strategy Review.*

United Way of Peel Region & Social Planning Council of Peel (2008). *The Black Community in Peel Region: An Explanatory Study.*

Appendix

- *Fact Sheet on the Total Immigrant Population in Peel (2006)*
- *Fact Sheet on the Recent Immigrant Population in Peel (2006)*
- *Fact Sheet on the Visible Minority Population in Peel (2006)*
- *Map: Visible Minority Groups in Peel as a Percentage of Different Peel Neighbourhoods (2006)*
- *Fact Sheet on Agencies Serving Newcomers to Canada and Ethno-Specific Groups in Peel (2006)*
- *Map: Geographic Distribution of Agencies Serving Newcomers to Canada and Ethno-Specific Groups in Peel (2009)*

IMMIGRATION & LANGUAGE: PEEL REGION, 2006

Population

Total Population (2006)	1,159,405
Total Population (2001)	988,968
Population Growth 2001 - 2006	17.2%

Immigrant Population*

Total Immigrant Population	561,235
% of Total Population	48.6%

Immigrants by Period of Immigration

Total Immigrants by Period of Immigration: 561,235		
Before 1961	30,870	5.5%
1961 to 1970	49,310	8.8%
1971 to 1980	78,890	14.1%
1981 to 1990	102,925	18.3%
1991 to 2000	181,005	32.3%
2001 to 2006	118,220	21.1%

Immigrants by Age at Immigration

Total Immigrants by Age at Immigration: 561,235		
Under 5 years	42,635	7.6%
5 to 14 years	98,835	17.6%
15 to 24 years	134,710	24.0%
25 to 44 years	226,625	40.4%
45 years and over	58,430	10.4%

Immigrants by Place of Birth (Top 5)

Total Immigrants by Place of Birth: 561,235		
Southern Asia	168,750	30.1%
Southern Europe	63,360	11.3%
Southeast Asia	53,130	9.5%
Caribbean and Bermuda	52,330	9.3%
Eastern Europe	42,860	7.6%

Recent Immigrants by Place of Birth (Top 5) [2001-2006]

Total Recent Immigrants by Place of Birth: 118,220		
Southern Asia	60,665	51.3%
Southeast Asia	10,830	9.2%
Eastern Asia	9,195	7.8%
West Central Asia & the Middle East	8,440	7.1%
Eastern Europe	5,555	4.7%

Generation Status

Total Population 15+ by Generation Status: 909,145		
1st generation	534,340	58.8%
2nd generation	186,755	20.5%
3rd generation or more	188,030	20.7%

Language (Mother Tongue**)

Total Population by Mother Tongue: 1,154,070		
Multiple Responses	27,895	2.4%
Single Responses	1,126,165	97.6%
English	603,445	52.3%
French	11,975	1.0%
Non-official Languages	510,760	44.3%
Punjabi	92,820	8.0%
Urdu	42,975	3.7%
Chinese	41,850	3.6%
Polish	34,830	3.0%
Portuguese	31,790	2.8%
Other languages	266,495	23.1%

Home Language ***

Total Population by Home Language: 1,154,070		
Multiple Responses	52,420	4.5%
Single Responses	1,101,645	95.5%
English	781,855	67.7%
French	5,180	0.4%
Non-official languages	314,610	27.3%
Punjabi	75,320	6.5%
Chinese	32,705	2.8%
Urdu	29,615	2.6%
Polish	22,585	2.0%
Spanish	14,800	1.3%
Other languages	139,585	12.1%

DEFINITIONS

- * People who are or who have ever been landed immigrants: Landed immigrants are people who have been permitted by immigration authorities to live in Canada permanently; some will have lived in Canada for a number of years, while others have arrived recently.
- ** Refers to the first language learned at home in childhood and still understood by the individual at the time of the census.
- *** Refers to the language spoken most often or on a regular basis at home by the individual at the time of the census.

Note: Totals may not exactly equal the sum of their components due to rounding.

Source: The Social Planning Council of Peel, January 2008 (based on Statistics Canada, *Census of Canada, 2006*, results derived from the PC9500 demographic analysis system).

**RECENT IMMIGRANTS IN PEEL REGION:
IMMIGRATED TO CANADA BETWEEN 2001 AND 2006**

Population		
Male	56,590	47.9%
Female	61,630	52.1%
Total Recent Immigrants	118,220	100.0%

Age Groups		
0 - 4 years	4,590	3.9%
5 - 9 years	10,090	8.5%
10 - 14 years	9,575	8.1%
15 - 24 years	18,850	15.9%
25 - 44 years	51,695	43.7%
45 - 64 years	18,660	15.8%
65+ years	4,780	4.0%

Age at Immigration		
Total Recent Immigrants	118,220	100.0%
Under 5 years	9,365	7.9%
5 - 14 years	19,645	16.6%
15 - 24 years	18,970	16.0%
25 - 44 years	50,825	43.0%
45 years and over	19,420	16.4%

Place of Birth		
Total Recent Immigrants	118,220	100.0%
1. India	40,915	34.6%
2. Pakistan	15,705	13.3%
3. Philippines	8,530	7.2%
4. China	6,525	5.5%
5. Sri Lanka	2,610	2.2%
6. All Others	43,925	37.2%

Visible Minority Immigrant Groups		
Total Recent Immigrants	118,215	100.0%
Non-Visible Minorities	12,325	10.4%
Visible Minorities	105,895	89.6%
1. South Asian	65,090	55.1%
2. Filipino	8,400	7.1%
3. Chinese	7,710	6.5%
4. Black	7,465	6.3%
5. Arab	4,960	4.2%
6. Latin American	3,395	2.9%
7. Southeast Asian	2,145	1.8%
8. West Asian	1,985	1.7%
9. Korean	1,970	1.7%
10. Japanese	220	0.2%
11. Visible minority n.i.e.	1,070	0.9%
12. Multiple visible minority	1,490	1.3%

Language (Mother Tongue)		
Multiple Responses	4,055	3.4%
Single Responses	114,165	96.6%
English	18,335	15.5%
French	835	0.7%
Non-Official Languages	94,995	80.4%
1. Punjabi	19,700	16.7%
2. Urdu	14,690	12.4%
3. Chinese	6,925	5.9%
4. Tagalog (Pilipino, Filipino)	6,150	5.2%
5. Hindi	5,700	4.8%
6. All Others	41,830	35.4%

Marital Status (Persons 15 Years+)		
Single	21,155	22.5%
Married	66,325	70.6%
Widowed	2,880	3.1%
Divorced	1,960	2.1%
Separated, but still married	1,645	1.8%

Recent Immigrants Living Alone		
Persons Living Alone	1,665	1.4%
Seniors Living Alone	65	1.4%

Education (Persons 15 Years+)		
No Certificate or Diploma	15,875	16.9%
Certificate, diploma or degree	78,085	83.1%
High School Certificate	19,050	20.3%
Trades with Cert/Diploma	3,120	3.3%
Community College	7,290	7.8%
University:		
Without degree	7,455	7.9%
Bachelor's degree or higher	41,175	43.8%

Employment (Persons 15 Years+)		
Participation Rate	69% (# 64,610)	
Employment Rate	61% (#57,300)	
Unemployment Rate	11% (#7,305)	

Total Income in 2005 (Persons 15 Years+)			
	<u>Total Pop</u>	<u>Male</u>	<u>Female</u>
Median Income \$	15,066	20,291	11,714
Average Income \$	20,858	25,783	16,226

Low Income 2005 - Persons in Private Households	
Prevalence of low income before tax	53.0%
Prevalence of low income after tax	26.0%

Source: The Social Planning Council of Peel, December 2008 (based on Statistics Canada, Target Group Profile, Census 2006).
 Note: Totals may not exactly equal the sum of their components due to rounding.
 For more information: www.spcpeel.com cmshazey@spcpeel.com

THE VISIBLE MINORITY POPULATION IN PEEL, 2006*

Population

Male	283,760	49.2%
Female	292,500	50.8%
Total Visible Minorities	576,260	100.0%

Age Groups

0 - 4 years	46,840	8.1%
5 - 9 years	48,660	8.4%
10 - 14 years	49,035	8.5%
15 - 24 years	85,410	14.8%
25 - 44 years	191,050	33.2%
45 - 64 years	120,435	20.9%
65+ years	34,835	6.0%

Place of Birth

Total Visible Minorities	576,260	100.0%
Born in Canada	169,560	29.4%
Born outside Canada	406,700	70.6%

Immigrant Status & Period of Immigration

Total Visible Minorities	576,260	100.0%
Non-permanent residents	8,490	1.5%
Non-immigrants	170,235	29.5%
Immigrants	397,535	69.0%
Before 1961	960	0.2%
1961 to 1970	13,715	2.4%
1971 to 1980	51,830	9.0%
1981 to 1990	74,660	13.0%
1991 to 2000	150,525	26.1%
2001 to 2006	105,850	18.4%

Language (Mother Tongue) (single/multiple responses)

Total Visible Minorities	576,260	100.0%
English	229,745	39.9%
French	2,585	0.4%
Non-Official Languages	343,930	59.7%

Marital Status (Persons 15 Years+)

Total Visible Minorities 15+	431,720	100.0%
Single	130,615	30.3%
Married	259,975	60.2%
Divorced	15,790	3.7%
Separated	10,990	2.5%
Widowed	14,350	3.3%

Home Ownership

Total Visible Minorities	576,255	100.0%
Owners	461,485	80.1%
Renters	114,770	19.9%

Census Family Status

Lone parents	24,235	4.2%
--------------	--------	------

Household Living Arrangements

Persons living alone	11,965	2.1%
----------------------	--------	------

Education

Total Visible Minorities 15+	431,720	100.0%
No Certificate or Diploma	80,665	18.7%
High School Certificate	109,030	25.3%
Trades with Cert/Diploma	23,605	5.5%
Community College	59,860	13.9%
University:		
Without degree	35,425	8.2%
Bachelor's degree or higher	123,145	28.5%

Employment (Persons 15 Years+)

Participation rate	71.0%	(# 306,985)
Unemployment rate	8.0%	(# 24,920)

Total Income 2005 (Persons 15 Years+)

Average Income	\$29,465
Median Income	\$22,489

Employment Income 2005 (Persons 15 Years+)

Average Employment Income	\$32,059
Median Employment Income	\$26,262

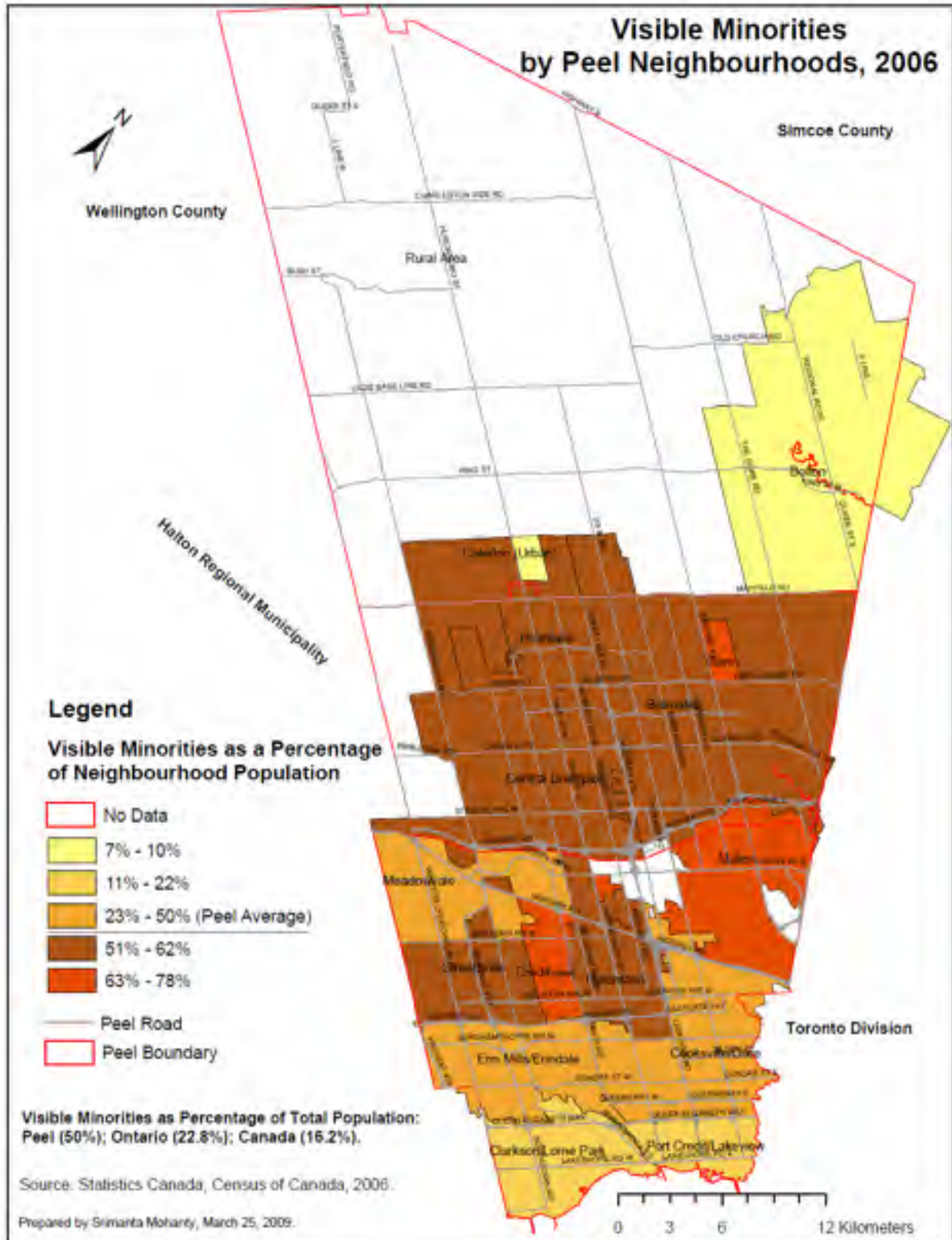
Low Income 2005

Private Households	
Prevalence of low income before tax	19.4%
Prevalence of low income after tax	14.7%
Persons in Economic Families	
Prevalence of low income before tax	18.7%
Prevalence of low income after tax	13.9%
Unattached Individuals	
Prevalence of low income before tax	39.9%
Prevalence of low income after tax	36.1%

* All Visible Minority population figures are for residents in private households.

Note: Totals may not exactly equal the sum of their components due to rounding.

Source: The Social Planning Council of Peel, July 2007 (based on Statistics Canada, Census, 2006 Special Custom Cross Tabulation).



**FACT SHEET ON THE AGENCIES SERVING NEWCOMERS AND
ETHNO-SPECIFIC GROUPS IN PEEL, 2009**

Total Agencies

Settlement Agencies:	71	74.7%
Mainstream Agencies:	24	25.3%
Total Agencies:	95	100.0%

Settlement Service Agencies

Ethno-Specific Agencies:	27	38.0%
Ethno-Specific Social Clubs:	20	28.2%
Multi-Ethnic Agencies:	19	26.8%
Neighbourhood Centres:	5	7.0%
Total Agencies:	71	100.0%

Total Agencies by Category

Ethno-Specific Agencies & Clubs:	47	49.5%
South Asians:	12	12.6%
Blacks:	11	11.6%
Chinese:	5	5.3%
Arabs:	4	4.2%
West Asians:	1	1.1%
Southeast Asians:	2	2.1%
Filipinos:	3	3.2%
Italians:	5	5.3%
Polish:	2	2.1%
Portuguese:	1	1.1%
Hispanic:	1	1.1%
Multi-Ethnic Groups:	19	20.0%
Neighbourhood Centres:	5	5.3%
Mainstream:	24	25.3%

Settlement Service Agencies- Average # of Years in Existence

Settlement Agencies:	17.1
Ethno-Specific Service Agencies:	14.8
Ethno-Specific Social Clubs:	13.5
Multi-Ethnic Agencies:	18.4
Neighbourhood Centers	27.8
Mainstream Agencies:	25.8
All Agencies:	18.1

of Registered Charities 1971 -2009

Settlement Agencies:	25
Ethno-Specific Service Agencies:	11
Multi-Ethnic Agencies:	9
Neighbourhood Centers	5
Mainstream Agencies:	15
All Agencies:	40

Average # of Persons on Board of Directors

Settlement Agencies:	10.6
Ethno-Specific Agencies:	11.6
Multi-Ethnic Agencies:	9.5
Neighbourhood Centres:	10.4
Mainstream Agencies:	9.8
All Agencies:	10.3

Gender of Executive Director/President

	Male	Female
Settlement Agencies:	56.3%	43.7%
Ethno-Specific Service Agencies:	51.9%	48.1%
Ethno-Specific Social Clubs:	80.0%	20.0%
Multi-ethnic Agencies:	36.8%	63.2%
Neighbourhood Centres:	60.0%	40.0%
Mainstream Agencies:	45.8%	54.2%
All Agencies:	53.7%	46.3%

Average # of Fulltime & Part-Time Staff

Settlement (Full time)	28.0
Ethno-Specific Service Agencies:	17.8
Multi-ethnic Agencies:	11.6
Neighbourhood Centres:	52.6
Settlement (Part-time)	11.8
Ethno-Specific Service Agencies:	2.0
Multi-ethnic Agencies:	3.8
Neighbourhood Centres:	35.7

Programs Provided by Settlement Agencies

Agencies	# of Programs
Ethno-Specific Agencies:	150 43.5%
Social Clubs:	43 12.5%
Multi-Ethnic Agencies:	108 31.3%
Neighbourhood Centres:	44 12.8%
Total:	345 100%

Number of Agencies by Municipality

Peel	95
Mississauga	55
Brampton	25
Caledon	2
Mississauga & Brampton	12*
Mississauga, Brampton & Caledon	1*

**Agencies with offices in more than one location*



Note: Map=> 95 Agencies in 123 Service Locations.